

QUICK GUIDE

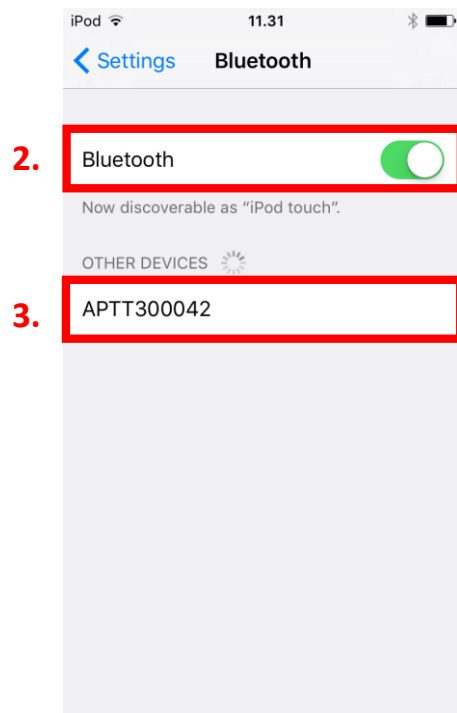
Connecting your PTT Voice Responder
to Zello (iOS) (EN)



A

Pairing your PTT Voice Responder with your iPhone via Bluetooth

1. Turn on your PTT Voice Responder by holding down the Power button for more than 3 seconds. After it is on, a blinking green light will indicate that the device is ready for pairing.
2. Turn on your iPhone's Bluetooth by going to: Settings → Bluetooth → Turn on.
3. Pair your PTT Voice Responder to your iPhone by selecting it from the Devices list. To know which device to select from the list, check the unique MAC-address on the back of your Voice Responder. Once it has successfully paired, a blue light will begin blinking on your device.



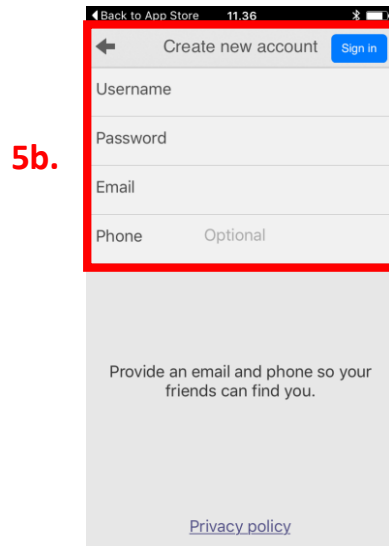
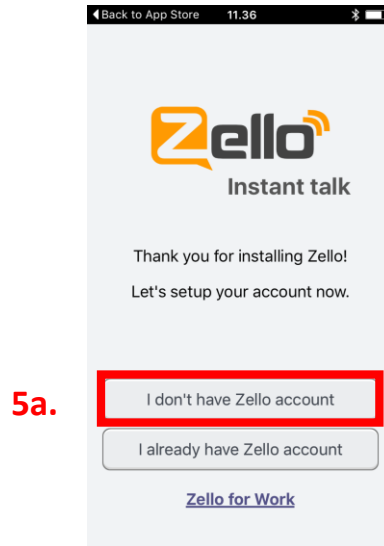
NOTE: The Voice Responder can only be paired with one device at a time. If you want to pair it to another device you need to perform an **Unpairing/ Software reset** by pressing and holding both soft buttons and both PTT buttons simultaneously, until the LED blinks once in yellow.



B

Installing the Zello application into your iPhone

4. From your iPhone, go to the iTunes App Store, search for the application called **Zello Walkie Talkie** and install it.
5. Open the application and create a new account with Zello (5a/ 5b).



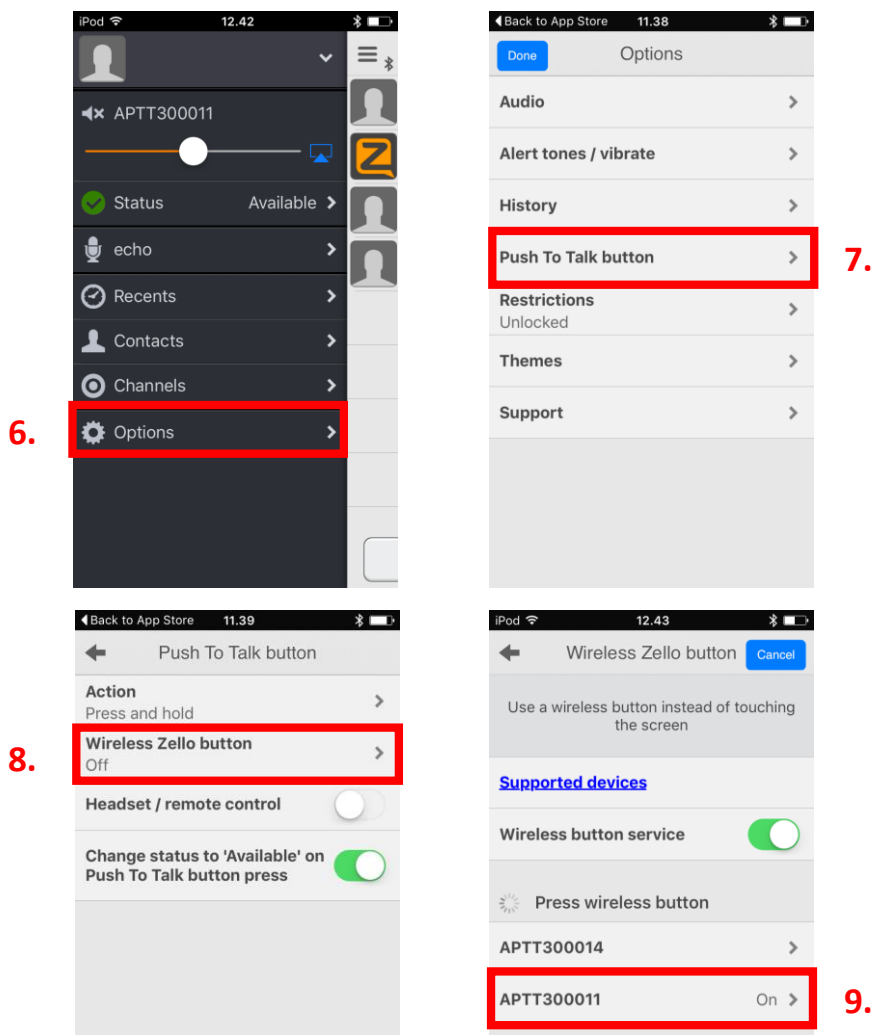
If you already have downloaded the Zello application and have an existing Zello account, simply log in with your username and password.



C

Enabling your PTT Voice Responder within Zello

6. In the Zello application, select the three horizontal lines displayed on the top left corner, and from the list select Options.
7. Select 'Push to talk button'.
8. Select 'Wireless Zello button'.
9. Turn this function on and select your device from the list.



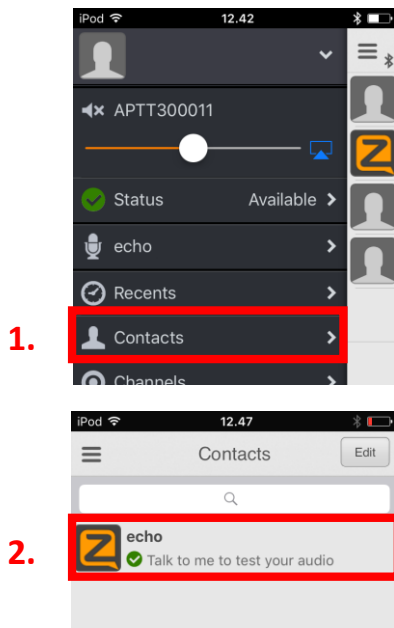
If you cannot find your PTT Voice Responder from the list, make sure that your Voice Responder is still connected to your iPhone via Bluetooth (the LED should be blinking in blue). If it is not, perform part A again.



Using your AINA PTT Voice Responder with Zello

To get to know how your Voice Responder works and sounds with Zello, you can use the 'echo' contact that is automatically included in your Zello contacts list.

1. In the Zello application, select the three horizontal lines displayed on the top left corner, and from the list select Contacts.
2. In the Contacts menu, select 'echo'.
3. Press and hold the primary PPT button on your Voice Responder. After the audio indication, speak into your Voice Responder. When you are done, release the button.
4. Your message will be played back to you from your device's speaker.



For more information on how to use the Zello application please visit their website:
www.zello.com



AINA PTT Voice Responder's main button functions when connected to Zello



Button	Function
Power ON/ OFF	Press for more than 3 seconds to turn the device on/off.
Emergency	Press to send a call alert to a Zello contact.
Primary PTT	Press and hold to speak. Release when you are done.
Secondary PTT	Press to communicate with a pre-assigned contact/ channel. Assign the secondary PTT button by selecting a user or channel on Zello, hold down the primary PTT button and then hold down the secondary PTT button for a few seconds. Finally, release both buttons.
Volume buttons	Press and hold to increase/ decrease the speaker's volume.
Soft buttons	<ul style="list-style-type: none"> • Press either soft button to change contact/ channel. • Press and hold the left soft button to (de)activate the LED. • Press and hold both soft buttons to (de)activate Covert Mode in which LED indications are suppressed and audio annunciations are only delivered through a headset.

Visit www.aina-wireless.com to find additional accessories, an extended user manual of the AINA PTT Voice Responder and more user guides. If you have any further questions, you can also email us at: info@aina-wireless.com

