

QUICK GUIDE

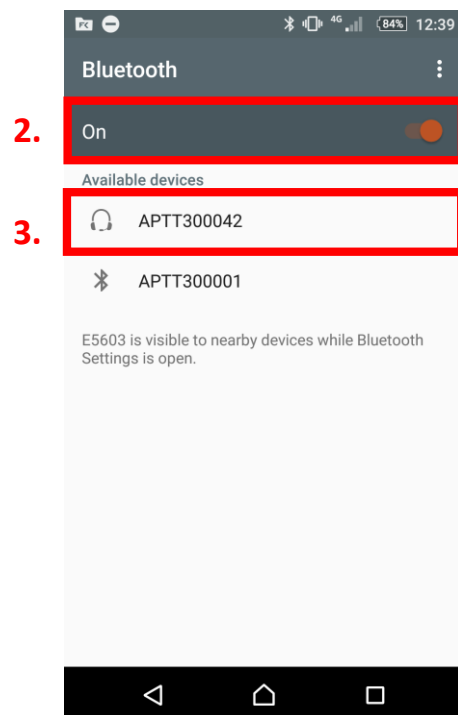
Connecting your PTT Voice Responder to Talk-IP (Android) (EN)



A

Pairing your PTT Voice Responder with your smartphone via Bluetooth

1. Turn on your PTT Voice Responder by holding down the Power button for more than 3 seconds. After it is on, a blinking green light will indicate that the device is ready for pairing.
2. Turn on your smartphone's Bluetooth by going to: Settings → Bluetooth → Turn on.
3. Pair your PTT Voice Responder to your smartphone by selecting it from the 'Available devices' list. To know which device to select from the list, check the unique friendly name on the back of your Voice Responder. Once it has successfully paired, a blue light will begin blinking on your device.



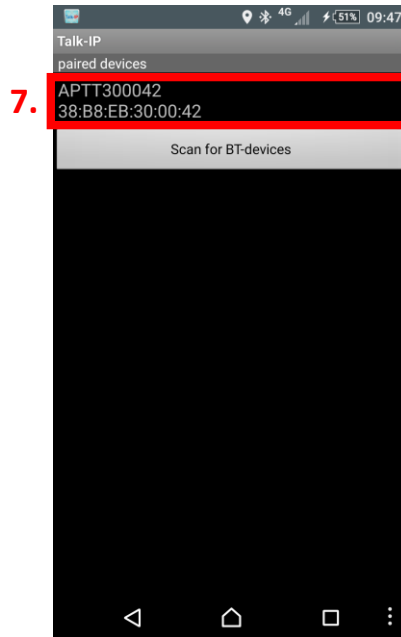
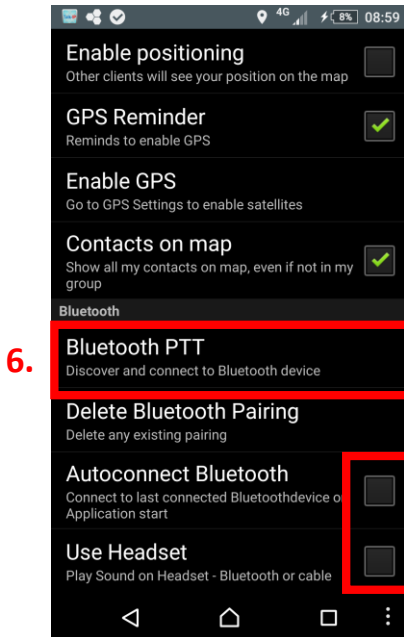
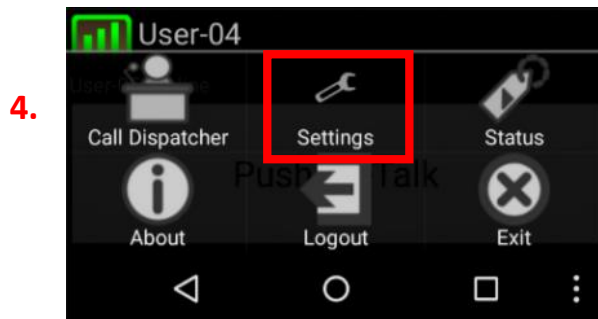
NOTE: The Voice Responder can only be paired with one device at a time. If you want to pair it to another device you need to perform an **Unpairing/ Software reset** by pressing and holding both soft buttons and both PTT buttons simultaneously, until the LED blinks once in yellow. More about this at the end of the guide.



B

Enabling your PTT Voice Responder within Talk-IP

4. In the Talk-IP application, login with your personal account details and select Settings.
5. Enable/ tick both 'Autoconnect Bluetooth' and 'Use Headset'.
6. Then select 'Bluetooth PTT'.
7. From the list of paired devices, select your PTT Voice Responder to connect it to the application.



If you cannot find your PTT Voice Responder from the menu, make sure that your Voice Responder is still connected to your phone via Bluetooth (the LED should be blinking in blue). If it is not, perform part A again.



AINA PTT Voice Responder's main button functions when connected to Talk-IP



Button	Function
Power ON/ OFF	Press for more than 3 seconds to turn the device on/off.
Primary PTT	Press and hold to speak. Release when you are done.
Secondary PTT	Press to start a dispatcher session/ call. Use the Primary PTT button to send messages.
Emergency	Press to send an SOS to dispatcher. The dispatcher will receive your location and hear what is happening.
Volume buttons	Press and hold to increase/ decrease the speaker's volume.
Soft buttons	These buttons have multiple functions: <ul style="list-style-type: none"> • Press and hold the left soft button to (de)activate the LED. • Press and hold both soft buttons to (de)activate Covert Mode in which LED indications are suppressed and audio annunciations are only delivered through a headset.

Visit www.talkip-ag.com to find additional information about the Talk-IP application and its use.



Troubleshooting

Problem	Possible Cause	Solution
The Voice Responder will not pair with the smartphone.	Single pairing feature.	<p>Single pairing means that the device can only be paired to one smartphone at a time. If you would like to pair your Voice Responder with another phone, you must perform the following two steps:</p> <ol style="list-style-type: none"> 1) Press both PTT buttons and soft buttons for 5 seconds to reset the device and active its pairing mode. 2) Ensure that the phone you are pairing your device to does not have in its Bluetooth memory any previous pairings with the PTT Voice Responder. Do this by 'forgetting' the previous pairing from the Bluetooth menu.
	Phone has not been turned off for a long time.	Smartphones need to be turned off completely at times. Turn your phone off, keep it off for a minute and then turn it back on. Your Voice Responder should connect again.
The Voice Responder's speaker and/ or LED is not working.	LED disabled mode activated.	Press the left soft button for 3 seconds. The blinking LED light will be active again.
	Covert mode activated.	Press both soft buttons for 3 seconds. Covert mode will be deactivated, and the speaker and LED will work again.
	Device is out of battery.	Allow the device to charge using the micro-USB port.
The PTT button doesn't work.	The PTT button has not been activated within the application.	From Talk-IP's application settings, enable 'Autoconnect Bluetooth' and 'Use Headset', and select your Voice Responder from the 'Bluetooth PTT' list of paired devices.

Visit www.aina-wireless.com to find additional accessories, an extended user manual of the AINA PTT Voice Responder and more user guides. If you have any further questions, you can also email us at: info@aina-wireless.com

