

QUICK GUIDE

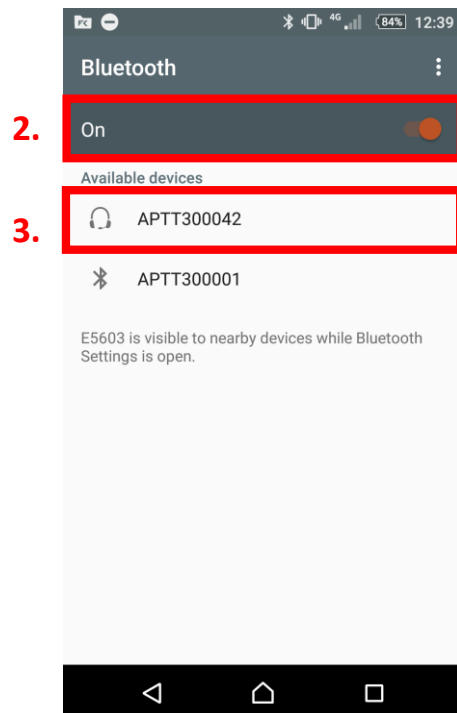
Connecting your PTT Voice Responder to ESChat (Android) (EN)



A

Pairing your PTT Voice Responder with your smartphone via Bluetooth

1. Turn on your PTT Voice Responder by holding down the Power button for more than 3 seconds. After it is on, a blinking green light will indicate that the device is ready for pairing.
2. Turn on your smartphone's Bluetooth by going to: Settings → Bluetooth → Turn on.
3. Pair your PTT Voice Responder to your smartphone by selecting it from the 'Available devices' list. To know which device to select from the list, check the unique friendly name on the back of your Voice Responder. Once it has successfully paired, a blue light will begin blinking on your device.



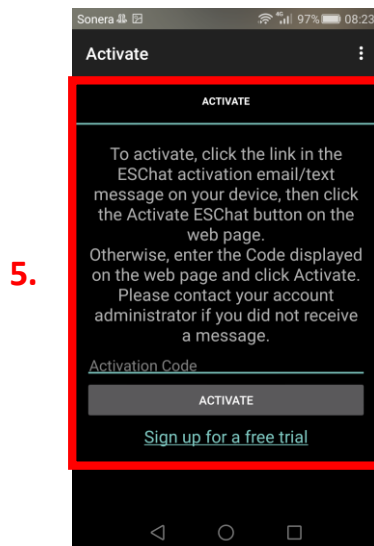
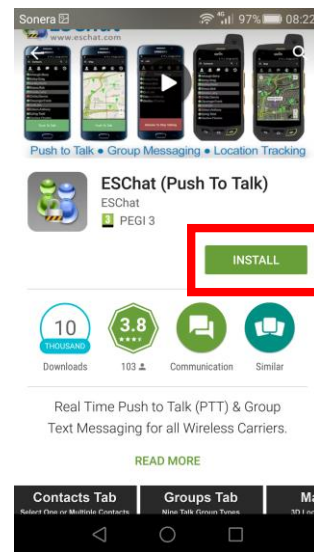
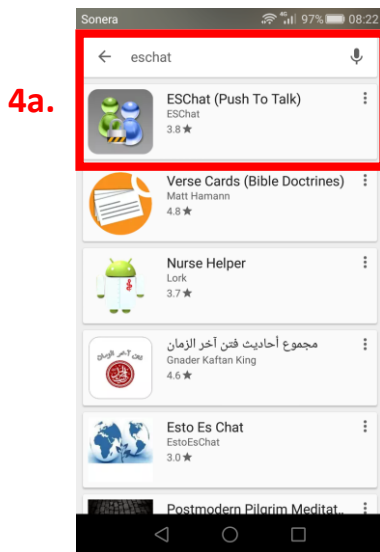
NOTE: The Voice Responder can only be paired with one device at a time. If you want to pair it to another device you need to perform an **Unpairing/ Software reset** by pressing and holding both soft buttons and both PTT buttons simultaneously, until the LED blinks once in yellow.



B

Installing the ESChat application into your smartphone

4. From your smartphone, go to the Google Play Store, search for the application called **ESChat** (4a) and install it (4b).
5. Open the application and activate your account with the details provided by ESChat.

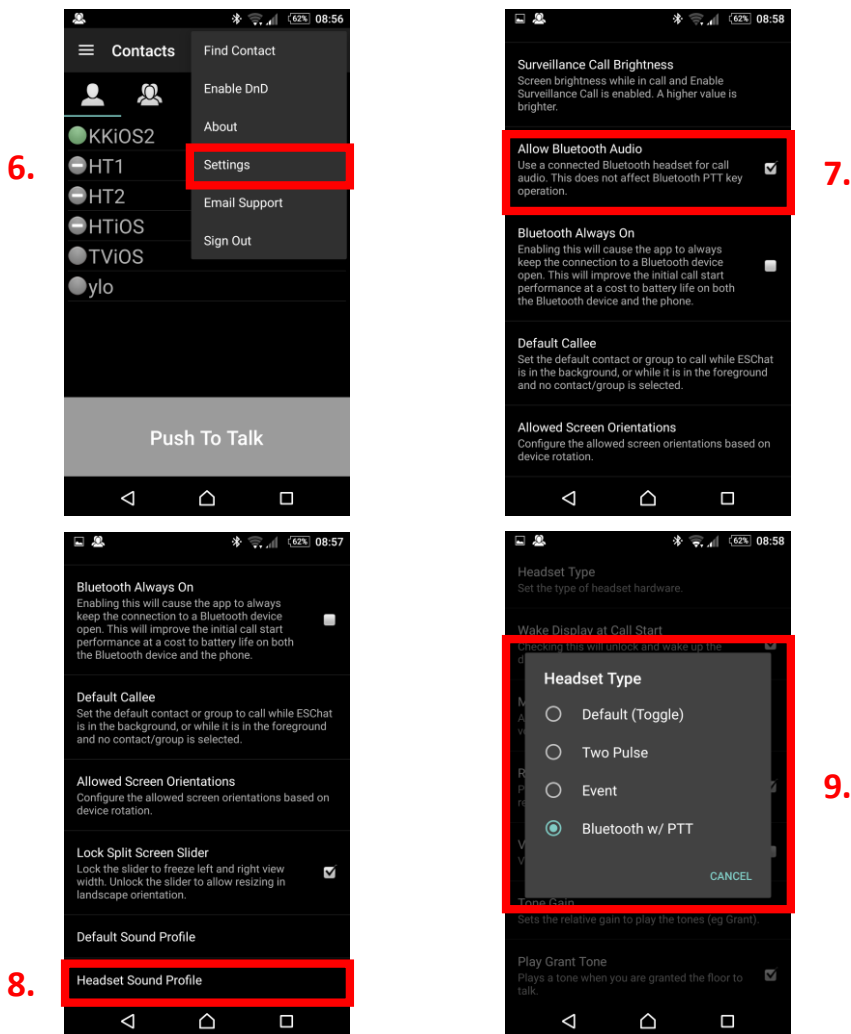


If you have already downloaded the ESChat application and have an existing account, simply log in.



Enabling your PTT Voice Responder within ESChat

6. In the ESChat application, select the three vertical dots displayed on the top right corner, and from the list select 'Settings'.
7. Near the bottom of the list enable/ tick 'Allow Bluetooth Audio'.
8. Then select 'Headset Sound Profile'.
9. Select 'Headset Type' and from the list 'Bluetooth w/PTT'.



AINA PTT Voice Responder's main button functions when connected to ESChat



Button	Function
Power ON/ OFF	Press for more than 3 seconds to turn the device on/off.
Primary/ Secondary PTT	Press and hold to speak. Release when you are done.
Volume buttons	Press and hold to increase/ decrease the speaker's volume.
Soft buttons	<p>These buttons have multiple functions:</p> <ul style="list-style-type: none"> • Press and hold the left soft button to (de)activate the LED. • Press and hold both soft buttons to (de)activate Covert Mode in which LED indications are suppressed and audio annunciations are only delivered through a headset.

Visit www.aina-wireless.com to find additional accessories, an extended user manual of the AINA PTT Voice Responder and more user guides. If you have any further questions, you can also email us at: info@aina-wireless.com

